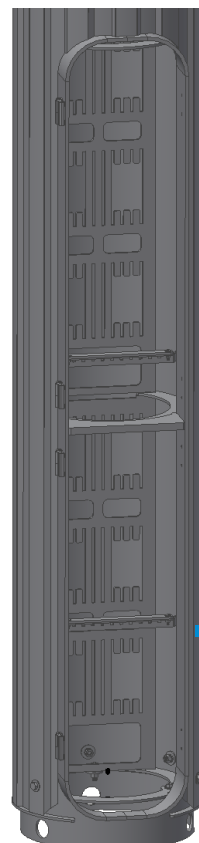


CapCell™ – Grade Level Internal Radio Equipment Area (11.17 Cu.Ft.)

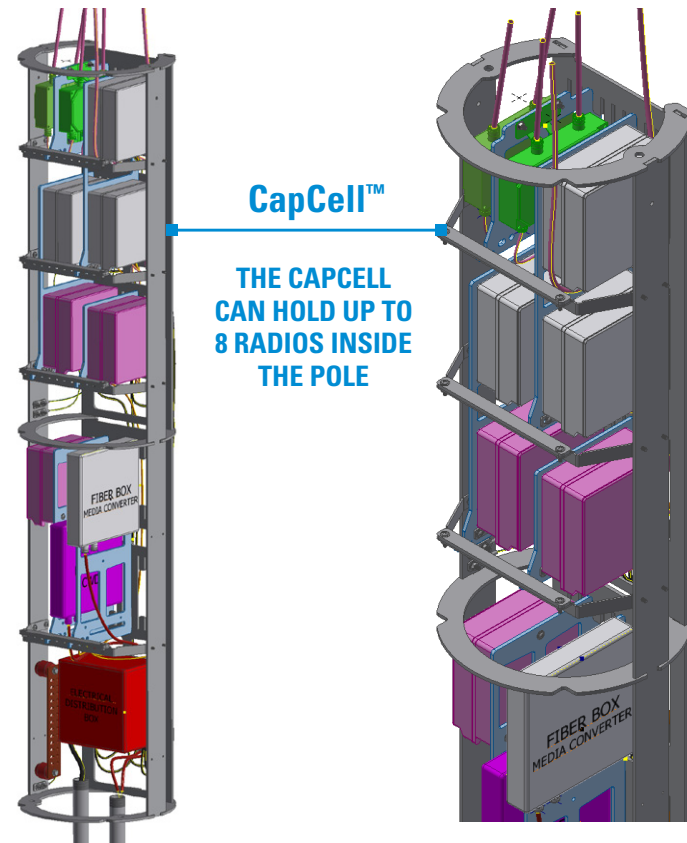
The KitstiK's unique patent-pending design—including the CapCell™ and telescoping / camlock features—integrates ALL of the required equipment components: wiring, radios and antennas, for a single or multiple carrier solution, entirely within a sleek, attractive pole.



**BASE
WITH
DOORS**



**BASE
WITHOUT
DOORS**



CapCell™

**THE CAPCELL
CAN HOLD UP TO
8 RADIOS INSIDE
THE POLE**

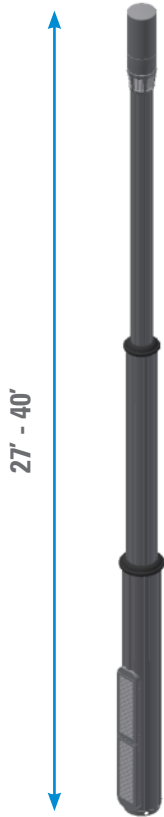
For more detailed information, contact David Wigdahl: daw@nepSA.com or call 847.584.2010.



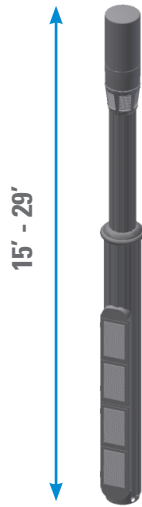
MAKING CITIES SMARTER®

KitstiK™ PRODUCT LINE OVERVIEW

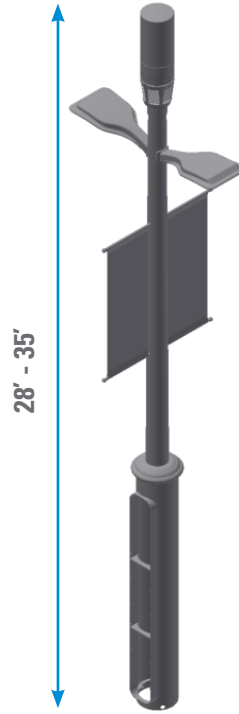
The starting point for a Smart City



KitstiK™ 18 t/s
Telescopic or static pole with variable rad center heights of 27'-40' with or without light arms. 11.17 Cu.Ft. of radio equipment space at ground level.



KitstiK™ 14 s
Static pole heights between 15'-29' with or without light arms. 7.75 Cu.Ft. of radio equipment space at ground level.



KitstiK™ 18 ms
Round steel static pole with heights between 28'-35' with or without light arms on tapered steel pole. 14.82 Cu.Ft. of radio equipment space at ground level.



Available in 4 stock colors.
Custom colors available.

The KitstiK's unique patent-pending design—including the CapCell™ and telescoping / camlock features—integrates ALL of the required equipment components: wiring, radios and antennas, for a single or multiple carrier solution, entirely within a sleek, attractive pole.



ANTENNA ASSEMBLY



ANTENNA ASSEMBLY WITHOUT ANTENNA, SKIRT OR VENTS



CAMLOCK

For more detailed information, contact David Wigdahl: daw@nepsa.com or call 847.584.2010.